

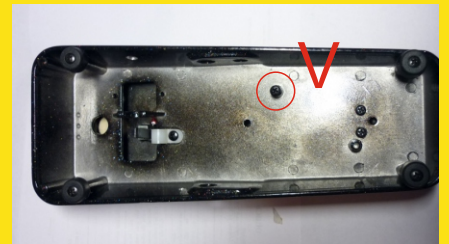


Installation Instructions PCB Wah-Wah-Watson into the body standard pedal WAH.

For installation, you will need:

1. Standard box WAH - you can use almost any WAH pedal box with potentiometer controls - CryBaby, Vox and others. In our case, we use the box, purchased here: http://www.4siteelectronics.com/Wah_Enclosure_p/500-1008.htm
2. Collected and customized PCB Wah-Wah-Watson.
3. A set of assembling :
 electric drill with drill bits (3 mm, 7.5 mm)
 wrenches (10,12,14),
 screwdriver,
 pliers,
 tweezers,
 soldering iron,

To begin with take out and throw away from the pedal all the unnecessary elements. Here is an empty box.



1,2

Using electric drill make 2 holes in the box.
1 - 7.5 mm for potentiometer Volume.
2 - 3.0 mm for LED (Effect ON)

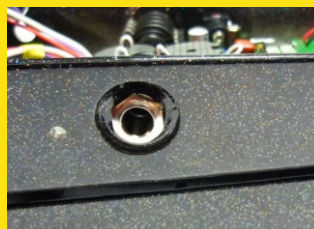
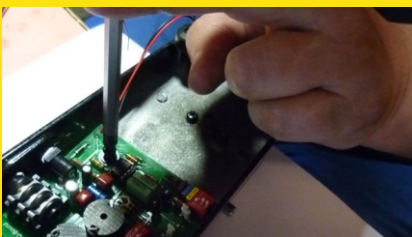
V

Prepare a seat for the mounting PCB. To do this, clean it from the paint. Use a knife or scalpel to do this.



You can now proceed with the mount PCB. First, tighten the fixing screw. Do it not completely. Finally, all screwing in the end of the assembly.

Do the same with nuts jack input and output. Do not tighten very much at first.



To Page 2.